



Read online: <https://newsletters.naavi.com/i/OMO6akJ>

Northcote Primary School Newsletter

Issue 3 · 03 Mar 2023

Collaborative Learning in a Community that Cares

In this issue



Students still need to wear their hats this ter



House Captains 2023



Dates to Remember



Help required for Athletics Day



Greetings from Shaun



Photo Day Late Orders



Pupil of the week Term 1



Fete News...Update 2023



Welcome to Our New Staff Members



'Slime the teacher' voting continues!



Kelly Sports is back! Hip Hop Heroes Dance



We need Fete volunteers- Please Sign Up!



District Swimming



Our Proud Sponsor



2023 First Aid Team



Camps, Sports and Excursions Funds



Classroom Cuisine 2023



OSH Club Information



COVID Process for Confirmed cases and clo



Important Information



2023 Music



Late Arrivals & Early Departures



School Access



Compass Attendance



Thornbury High School Open Night



Fete Tickets, Wristbands and Merchandise



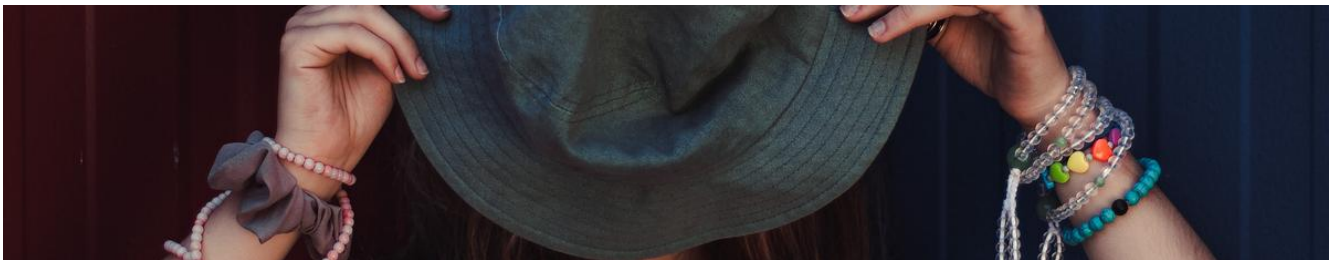
Compass Pay for all school payments.



2023 Parent Payment Arrangement - PPA



NPS Future students Tour Dates for 2023



Students still need to wear their hats this term.

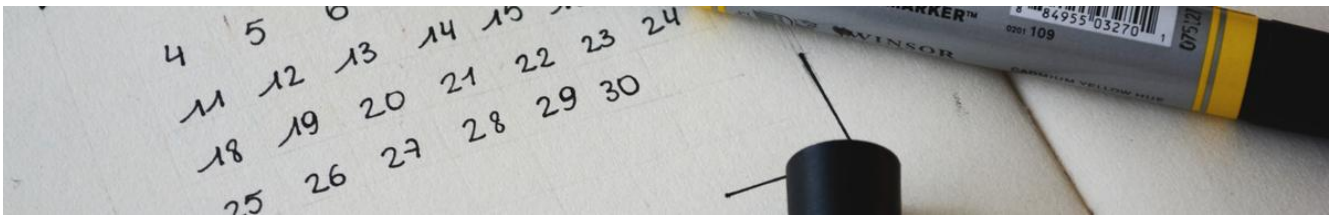
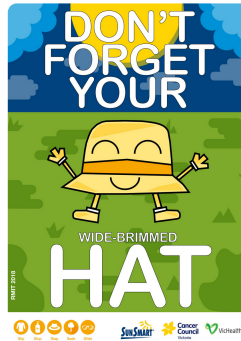
In line with the Departments Sun Smart Policy, Students are still required to wear their hats during recess and lunchtime until the 1st of May.

Please remind your children to bring their hats to school, as we only have a few spare to offer when they are forgotten, and they have been going very quickly.

(please note all hats must be wide brimmed hats, eg: no caps)

Unfortunately if students do not have a hat they will need to stay under cover, in the shade for recess and lunch.

We apologise for the inconvenience, but we currently only have a few large sized NPS hats to purchase at the office. If your child does not have an NPS hat we encourage them to wear a hat of their own for the time being, we don't want them missing out on playing in the sunshine.



Dates to Remember

2023 Term 1:

- Mondays Assembly 9.10am
- Monday 3.30pm - Kelly Sports
- Wednesday Lunchtimes - Hip Hop Heroes Dance classes
- Friday 3rd, 10th, 17th March - Slime the Teacher Voting (Canteen)
- Monday 13th March - Labour Day Public Holiday
- Tuesdays 14th March through to 30th May 9.30-10.30am - School Tours begin.
- Wednesday 15th March - Naplan testing begins.
- Saturday 18th March - NPS Fete!
- Tuesday 21st March - Harmony Day
- Tuesday 28th March - Whole School Athletics Day
- Thursday 6th April - End of Term 2.30pm Finish
- Friday 7th April - Good Friday Public Holiday
- Monday 24th April - Curriculum Day (student free day)
- Tuesday 25th April - ANZAC Day public holiday
- Wednesday 25th April - Term 1 begins for all students.

- Friday 2nd June - Prep 2024 Enrolments Forms completed.
- Monday 12th June - King's Birthday

**School Council and Sub Committee dates to be confirmed.



Greetings from Shaun

As another week comes to end, it has been lovely to reflect on how positive the start to the school year has been. Parents, carers, students and teachers have been coming to see me about how well everyone is settling in to the routines of school this year. Thanks to everyone for all working together to support our students in this.

School Council Elections

We have now filled our four vacancies from the parent category. Thank you and congratulations to the following successful nominees:

- Joanne Pitt
- Thomas Payen-Payne
- Christian Scallen
- Lucy Sinclair

I would also like to welcome Bale Micovski and Rebecca Garrow who nominated to join the School Council as the Teacher Representatives.

As very special thank-you to all those whose time on school council has come to an end. We thank-you for your commitment and dedication to the school.

We look forward to our first meeting of the newly elected council on the 15th of March.

Full time Preps

Our Preps finished their first full week this week, after completing all of their start of year assessment interviews that have been taking place on a Wednesday.

Thank-you Olivia

As many of you may be aware, Olivia finishes up this week after kindly agreeing to step in to teaching 5/6C for the first half of term one. I know many of you will join me in thanking Olivia for the amazing job she has done this year and wish her all the best in her travels.

I would also like to take this opportunity to announce that Nick Barclay will commence with us on Monday and will be teaching 5/6C until the end of the term. We warmly welcome Nick into the Northcote Primary School community.



Pupil of the week Term 1

2023

Week 5

Prep Natalie	Aiden E
Prep Isabelle	Kara G
Prep Meg	Heidi L
Grade 1/2 Sharif	Zadie C
Grade 1/2 Brigitte	Anouk S
Grade 1/2 Sam	Nyah B
Grade 1/2 Stephanie	Estella D
Grade 3/4 Matt	Hugo A
Grade 3/4 Lisa & Sarah	Sienna E
Grade 3/4 Jamal	Freddie D
Grade 3/4 Eleanor	Jennifer D
Grade 5/6 Steven	Tahlia B
Grade 5/6 Izzy	Lexi H
Grade 5/6 Olivia	Morrison F
Grade 5/6 Luke	Oscar G

Week 6 **To be celebrated at Monday's assembly**

Prep Natalie	Maggie B
Prep Isabelle	Samuel R
Prep Meg	Myles H
Grade 1/2 Sharif	Arlo M
Grade 1/2 Brigitte	Flynn D
Grade 1/2 Sam	Olive H
Grade 1/2 Stephanie	Davie R
Grade 3/4 Matt	
Grade 3/4 Lisa & Sarah	Max R
Grade 3/4 Jamal	Oscar N
Grade 3/4 Eleanor	Lucas D
Grade 5/6 Steven	Isla H
Grade 5/6 Izzy	Minh T
Grade 5/6 Olivia	Poppy V
Grade 5/6 Luke	James M

*** Please note there will be no Pupil of the Week for Week 7, due to no assembly on Monday 13th March.**



Welcome to Our New Staff Members

NPS would like to welcome our newest staff members:

Nick Barclay to the Grade 5/6 Team.

Nick will be joining the 5/6 team as Olivia embarks on her travel adventures.

Hi, I am Nick. I have been working as a Primary school teacher both in Queensland and Victoria since 2015. I have a background in theatre and performance and I worked as an actor when I was younger. I enjoy hiking and camping, as well as playing guitar and boardgames. If you see me around the school come and say hi.



Gaynor Martyn to the Italian Team.

Buongiorno!

My name is Gaynor; the new teacher of Italian (year 1 /2 and 3 /4) at Northcote PS.

I have over forty years teaching experience in all levels and programs of Primary school with experience in Italian school programs all over Melbourne. An extensive network of Italian colleagues keeps me informed of the latest language teaching innovations.

I'm thrilled to be part of the school's staff and look forward to working with all your children. Rosa and I have collaborated to design some great learning activities.

Growing up in Rosanna with Italian neighbours kindled my love of all things Italian.

I currently live in North Fitzroy so I can walk to school and stop for a 'caffè' on the way.

My approach to teaching focuses on having fun while learning the language and culture of Italy. In my classes I use games, activities and songs to help your children develop conversational Italian and knowledge of Italian culture. This will also develop their overall Literacy, strengthening literacy-related capabilities that are transferrable across learning areas.

I am looking forward to a year of cultural enrichment through language with lots of fun.

If you see me, please say "ciao".

Saluti

Gaynor Martyn





Kelly Sports is back! Hip Hop Heroes Dance is starting at NPS

We are pleased to announce that Kelly Sports is back on Monday's after school.

We have also added an extra level of fun to Wednesday Lunchtimes - Kelly Sports are also providing Hip Hop Dance classes in the Hall at Lunchtimes!!

Please find the flyer below to see how to join both of these exciting activities.



KELLY SPORTS SPORT & DANCE

TERM 1 2023



BOOK ONLINE NOW AT

 **KELLYSPORTS.COM.AU**

INFORMATION
FOR PARENTS

NORTHCOTE PRIMARY

KELLY SPORTS DANCE TERM 1 - HIP HOP HEROES

Over 6 weeks students will have the opportunity to move, groove, spin and slide to the sound of modern beats alongside our very experienced dance instructor. You will have a fantastic time learning the new moves in our high intensity, excitement-filled dance environment. Check out the routine on our Kelly Sports Inner Northern & Strathmore YouTube channel and book early for this incredibly fun program!

WHEN: Wednesday's
DATES: 1st March - 5th April
TIME: Lunchtime 1.30pm - 2.30pm
YEAR LEVELS: Prep - Grade 4
COST: \$96 (6 weeks)

SIZZLING SUMMER SPORTS

The Sizzling Summer Sports program allows your child to experience energetic and highly active multi-sport sessions which will challenge and improve your child's motor and co-ordination skills. The Sizzling Summer Sports program includes: Soccer, Basketball & Cricket. Our experienced coaches aim to develop and enhance the wide range of sporting skills of your child including kicking, catching & throwing while also improving strength, flexibility, hand-eye co-ordination, spatial awareness, co-operative skills and teamwork.

WHEN: Monday's
DATES: 27th Feb - 3rd April (No session Labour Day 13th March)
TIME: 3.30pm - 4.40pm on school grounds
YEAR LEVELS: Prep - Grade 4
COST: \$80 (5 weeks)

**FOR MORE INFORMATION & TO ENROL VISIT
WWW.KELLYSPORTS.COM.AU/INNER-NORTHERN**

Website: kellysports.com.au/inner-northern
Contact: Shane Oliver
Email: shane@kellysports.com.au
Phone: 0432 522 829
Facebook: #KellySportsInnerNorthern

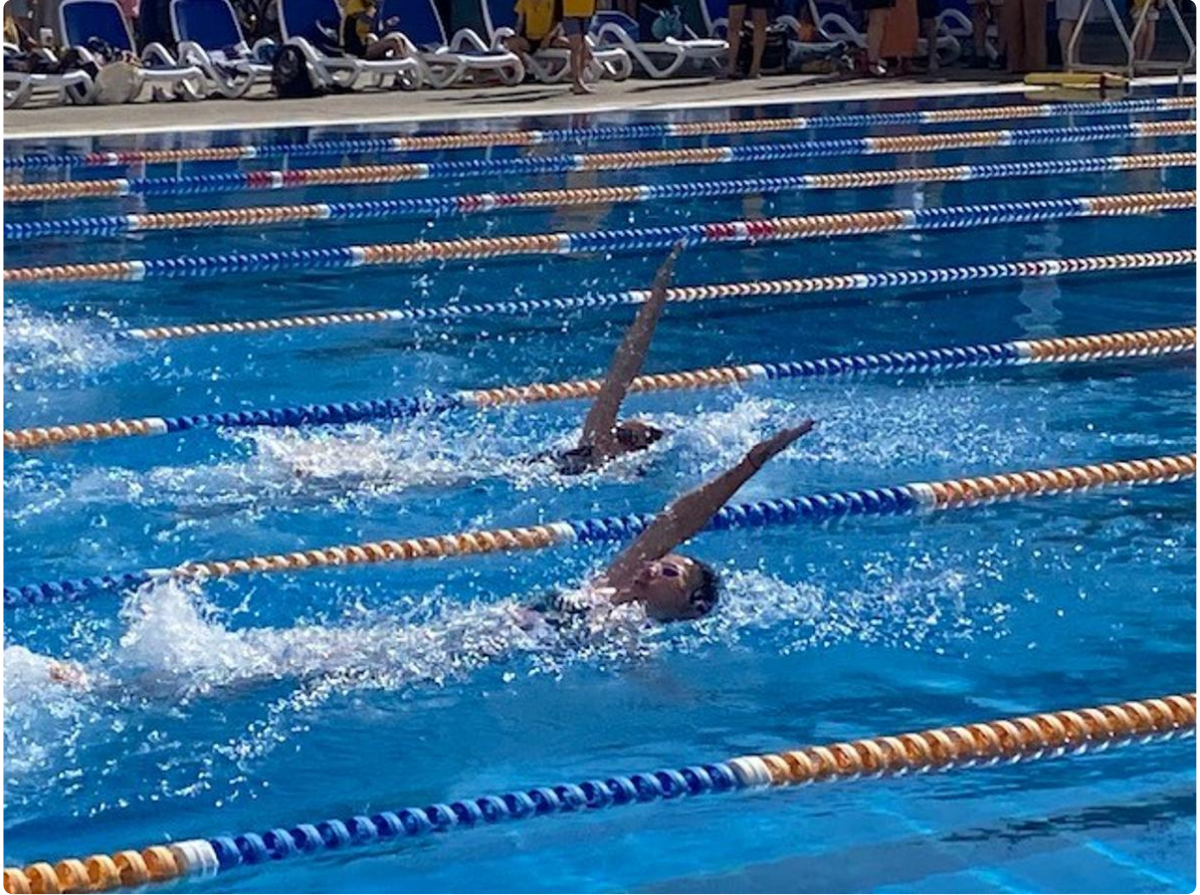

BOOK ONLINE NOW AT
KELLYSPORTS.COM.AU



District Swimming

Congratulations to all our NPS swimmers! Looks like it was a great day poolside.









Eleanor, Abby, Whale, Grace & Eva



Leni and family



House Captains 2023

Announcing our House Captains for 2023.....

Yellow House

Captains Oscar Gaymer and
Sam Moston

Vice Captains Audrey Bui and
Adelle McLennan

Blue House

Captains Eva Schmidt and
Matthew Donnelly

Vice Captains Francesca Thomas and
Monty Mclean

Green House

Captains Zoe Byrnes and Max Parker

Vice Captains Oscar Corrie and
Ned Leigh

Red House

Captains Tol Papadimas and
Eleanor Clarke

Vice Captains Harry Hibdige and
Prisha Bhardwaj



Help required for Athletics Day

Hello all,

Here is a little bit of information about our upcoming House Athletics Day. It is on **Tuesday the 28th of March at Coburg Athletics Track**. We also have a backup day booked after the school holidays on the 26th of April just in case of bad weather. I've added the timetable for the day broken into the Junior and Senior Carnivals for your reference.

I'm putting a call out for helpers for the day to make it run as smoothly as possible. If you are available and would like to volunteer please let me know what times you are available and if you would like to help with the Junior (P-2) or Senior Carnival (3-6) generally I am able to get you to assist with your students' events but if you have multiple you might need to jump around a little bit. I will also need some helpers in the morning to help set up before students get there. If you can do either or both, please email me (dale.mclean@education.vic.gov.au).

Consent & Payment for Athletics day will be live on Compass on Monday 6th March.

You will also need to do the annual Volunteer Induction through the Front Office before the event. We are still finalising the dates that of when we will run them so I will forward your details onto the Office and they will be in touch when they have the dates.

Thanks

Dale PE Teacher

P-2 Schedule

Time	Prep	Grade One	Grade Two
10:00-10:20	Arrive at Track and Fruit Snack		
10:20-10:40	Hurdles	Egg and Spoon	Rob the nest
10:40-11:00	Egg and Spoon	Rob the nest	Shuttle Relay
11:00-11:20	Recess Break		
11:20-11:40	60m Sprints	Hurdles	Egg and Spoon
11:40-12:00	Rob the nest	Shuttle Relay	60m Sprints
12:00-12:25	Break		

12:25-12:45	Shuttle Relay	60m Sprints	Hurdles
12:45-1:00	Pack bags and clean area		
1:00	Buses Arrive		

3 – 6 Schedule

9:45 – 10:00	Arrive at track.				
10:10 – 10:35	Optional 800m races.				
10:40 - 11:10	100m Races.				
11:15	Rotations Begin				
11:15 – 11:45	Rotation 1		11:50 – 12:20	Rotation 2	
	3/4 Boys	Shot Put		3/4 Boys	Discus
	3/4 Girls	Discus		3/4 Girls	Long Jump
	5/6 Boys	Long Jump		5/6 Boys	Triple Jump
	5/6 Girls	Triple Jump		5/6 Girls	Shot Put
12:25 – 12:55	Rotation 3		1:00 – 1:30	Rotation 4	
	3/4 Boys	Long Jump		3/4 Boys	Triple Jump
	3/4 Girls	Triple Jump		3/4 Girls	Shot Put
	5/6 Boys	Shot Put		5/6 Boys	Discus
	5/6 Girls	Discus		5/6 Girls	Long Jump
1:30 – 2:00	Lunch/ Optional Hurdles.				
2:00	Pack up and clean up board the buses to return to school.				



Photo Day Late Orders

advancedlife
photography . design . printing

Late Photo Orders 2023

Dear parents and students of Northcote Primary School,

IT'S STILL NOT TOO LATE TO ORDER 2023 SCHOOL PHOTOS BEFORE LATE FEES ARE INCURRED

Your school photo day was held on 28/02/2023 and all students are photographed regardless of purchase. If you did not place an order but would like to, it is not too late to order online.

ONLINE ORDERING Your child's photos are now available for secure online purchase

4 EASY STEPS TO ONLINE SCHOOL PHOTO ORDERING

Step 1:

Go to www.advancedlife.com.au and enter your school code YR9 4P5 RL8

Step 2: Enter your student's details

Step 3: Choose the package that best suits your needs (all orders will be returned to the school for collection)

Step 4: Pay for the photos via the shopping cart (upper right corner of the page)

****Online Orders have a 1.5% merchant fee applied when using Visa, Mastercard or PayPal.**

Please Note: Online ordering is available up to 7 days after photo day and after this time, processing fees of \$15 will apply to all orders.

Place your order on or before **7/03/2023** to avoid the processing fees!

advancedlife

school photography & print specialists

A PACK DELUXE DELUXE PACKAGE \$59.00

Composite Format
Traditional Group Format

Perfect for 10x8" Frames

Your school has chosen either the composite, traditional or virtual group format for your packages

126x176mm
82x127mm
38x135mm
38x63mm
63x74mm
53x74mm
29x41mm

\$5.90 per week
LATITUDE PAY

48 Personalised Stickers

package includes high res digital portrait image

B PACK VALUE VALUE PACKAGE \$54.00

Composite Format
Traditional Group Format

Perfect for 10x8" Frames

Your school has chosen either the composite, traditional or virtual group format for your packages

126x176mm
82x127mm
38x135mm
38x63mm
63x74mm
53x74mm
29x41mm

\$5.40 per week
LATITUDE PAY

package includes high res digital portrait image

C PACK REGULAR REGULAR PACKAGE \$51.00

Composite Format
Traditional Group Format

Perfect for 10x8" Frames

Your school has chosen either the composite, traditional or virtual group format for your packages

126x176mm
53x74mm
29x41mm

\$5.10 per week
LATITUDE PAY

package includes high res digital portrait image

D PACK BASIC BASIC PACKAGE \$48.00 E - PORTRAIT ONLY \$31 F - GROUP ONLY \$30

Composite Format
Traditional Group Format

Perfect for 10x8" Frames

Your school has chosen either the composite, traditional or virtual group format for your packages

126x176mm
29x41mm
53x74mm

\$4.80 per week
LATITUDE PAY

package includes high res digital portrait image

126x176mm
53x74mm
29x41mm

\$3.10 per week
LATITUDE PAY

package includes high res digital portrait image

Composite Format
Traditional Group Format

Perfect for 10x8" Frames

Your school has chosen either the composite, traditional or virtual group format for your packages

\$3.00 per week
LATITUDE PAY

package does not include a high res digital image

AVAILABLE FOR ORDER ONLINE - SIBLING PHOTOGRAPHS, STICKERS, PERSONALISED MUGS & MORE

\$12

Personalised 48 Sticker Set

Our personalised sticker set features a range of 48 fun stickers many personalised with student name and/or image

Stickers set included in Package A or available to order online

SIBLING PHOTOS

Important: If your school offers sibling photos, online orders for siblings close at 12.00 a.m. the night before your school's first photo day. If you miss the order cut off, let your school know you would like a sibling photo taken, collect a sibling envelope from your school and return the completed order envelope (including exact cash payment) directly to our photographers. Sibling photographs are by request and cannot be ordered after photo day.

Flyer Code P

advancedlife

school photography & print specialists

HOW TO ORDER

OPTION 1 ORDER ONLINE NOW

Online payment options include Visa, Mastercard and PayPal. Alternatively, you can choose to pay over 10 weeks using LatitudePay.

STEP 1

Find your school's shared 9 digit community order code on the **advancedlife** order envelope.



STEP 2

Go to www.advancedlife.com.au on your computer, phone or tablet.

Enter your school's 9 digit order code in the 'order & download' box. This will take you to the secure online ordering site for your school.



STEP 3

Click on 'Order Photos' and complete your details and choose your package, then follow the payment process. During this process you can place orders for additional children at your school and sibling photos, if available.



OPTION 2 CASH/ENVELOPE ORDERING

Schools prefer orders placed online. However, if you are unable to order online, please complete your order using the order envelope provided.

STEP 1

Complete a separate order envelope for each individual child's package/s ordered. If ordering for more than one child, payment should be enclosed in the envelope of the eldest child and this should be indicated on the envelope of the other child/children (the envelope that does not have cash enclosed).

STEP 2

Enclose exact cash payment in one envelope for the package/s you are ordering. Payment for more than one child should be in the eldest child's envelope and marked at the bottom of the envelope in the space provided.

STEP 3

Return your completed envelope/s, with correct cash payment, to our photographers on photo day.

Please note: You must enclose exact correct payment, as change is not available. Credit card payments can only be made online and we no longer accept cheques. There is a separate envelope for sibling photo orders, should your school choose to offer sibling photos.

FREQUENTLY ASKED QUESTIONS

SIBLING PHOTOS

If your school offers sibling photos, online orders for siblings close at 12.00 a.m. the night before your school's first photo day. If you miss the order cut off, let your school know you would like a sibling photo taken, collect a sibling envelope from your school and return the completed order envelope (including exact cash payment) directly to our photographers. Sibling photographs are by request and cannot be ordered after photo day.

LATE ORDERS

If you miss photo day, portrait and group packages can still be ordered online for 7 days afterwards with no late fees. After that time, late orders will require separate processing and handling and therefore will incur a \$15 late fee per package.

ONLINE ORDER RECEIPTS

An order receipt will be emailed to the email address you provide during the ordering process. Please note that orders placed via PayPal can take up to 48 hours for payment to be processed and a receipt sent.

ARE THERE FEES FOR ORDERING ONLINE?

There are no fees for LatitudePay or envelope ordering. There is a 1.5% merchant fee applied when using Visa, Mastercard or PayPal. For more information go to: www.advancedlife.com.au/FAQ

SPORTS/EXTRA-CURRICULAR PHOTOS

Once sports/extra curricular photographs have been taken, processed and made available for order online, your school will send you a link that you can use to place your order online. A 20% discount is applied to sports/co-curricular orders placed within the first 2-weeks. After the 2-week discount period, orders can still be placed online at our standard prices.

CO-PARENTING FAMILIES

If you prefer to personally collect your photographic package from the school office, rather than have it sent home with your child, please select the "Collect Your Pack" option when you order online.

NOT FOR PUBLICATION STUDENT INFORMATION

If your child's image is "not for publication" and your school is aware of your decision, your child should not be presented to our photographers on photo day and school photographs will not be available for purchase. All students presented to our photographers by your school for a photo on photo day will be photographed, their images will appear in school photography packages and these packages will be available to purchase.

REFUND POLICY

Check your order carefully, as refunds are not available for incorrect choice. No refunds are available once your portrait image has been downloaded. To find out more, please visit: www.advancedlife.com.au

CONTACT US

Contact us at www.advancedlife.com.au/contact

advancedlife
school photography & print specialists

LATITUDEPAY *Shop now. Pay over 10 weeks. No interest. Ever.*
latitudepay.com

IMPORTANT: Sibling packages must be ordered before photo day, so your school knows to collect your children on photo day for a sibling photo. Final online orders for siblings close at 12.00 a.m. the night before your school's first photo day. If you miss the order cut off, let your school know you would like a sibling photo taken, collect a sibling envelope from your school and return the completed order envelope (including exact cash payment) directly to our photographers. Sibling photographs are by request and cannot be ordered after photo day. Only siblings attending the school are permitted to be photographed.

A PACK
DELUXE

DELUXE PACKAGE \$48.00

203x254mm (10x8")
126x176mm (4)
26x41mm (6)
38x63mm
38x135mm
82x127mm
63x87mm
\$4.80 per week LATITUDEPAY

package includes high res digital portrait image

B PACK
VALUE

VALUE PACKAGE \$33.00

203x254mm (10x8")
126x176mm (2)
26x41mm (3)
38x63mm
38x135mm
82x127mm
\$3.30 per week LATITUDEPAY

package includes high res digital portrait image

C PACK
REGULAR

REGULAR PACKAGE \$28.00

203x254mm (10x8")
126x176mm (2)
26x41mm (3)
\$2.80 per week LATITUDEPAY

package includes high res digital portrait image

D PACK
BASIC

BASIC PACKAGE \$25.00

126x176mm (2)
26x41mm (3)
\$2.50 per week LATITUDEPAY

package includes high res digital portrait image

E - ENLARGEMENT \$22

203x254mm (10x8")
\$2.20 per week LATITUDEPAY

Option E DOES NOT include a high res digital portrait image

PERSONALISED MUGS \$20

Available online only
\$2.00 per week LATITUDEPAY

Flyer Code S



Fete News...Update 2023

Our Fete is only 2 weeks away!! Super Exciting!!



Keep signing up to support our stalls - parents, grandparents, family members . . . This is our #1 priority!

We're asking families to sign up to one or two fete stalls with each shift only 1 hour. All you have to do is turn up, help out and have fun!

Sign up here <https://signup.com/go/SnQxkVp>



[Northcote Primary School Fete 2023](https://signup.com/go/SnQxkVp)

[signup.com](https://signup.com/go/SnQxkVp)

Volunteers to Letterbox drop

Thanks to families who have already collected a bundle of our fete flyers to distribute across our neighbourhood this weekend.

More are walkers needed to spread the word!

Grab some from Donna & Bridgette in the office 😊

Fete Tickets & Wristband Packages will be LIVE on Monday 6 March!

Look out for early-bird offers & some awesome NPS merchandise via Compass announcement

Last call for Silent Auction and hamper donations!

Many local businesses have generously donated vouchers for our silent auction, but we would dearly love a couple more big ticket items.


Do you or your family have a holiday house you could offer for a weekend? Are you a handyperson or tradie who could donate your services? Anything and everything would be greatly accepted.

We'd also love to receive any unwanted gifts still in their packaging and any large baskets that we could use for hampers. These can be left with Donna in the office.

Please get in touch with our Silent Auction team at silentauction.nps@gmail.com

Tx Sam 😊


Samantha Richardson NPS Fete Coordinator / Project Manager / CEO of 6yo lad



**Jellis
Craig**

Northcote Primary School is proudly sponsored throughout 2023 by Jellis Craig Inner North

Jellis Craig will donate \$500 sales commission or \$350 rental fee to Northcote Primary School when a family or staff member appoints a Jellis Craig Inner North Agent to sell or lease their home throughout 2023. Please mention you are part of our NPS village to ensure our school receives these generous donations.



Northcote
Primary School



'Slime the teacher' voting continues!

We have a new candidate for Slime the Teacher....our principal Shaun Wells. So bring those gold coins on Friday to vote.


Everyone's favourite 'Slime The Teacher' stall is back at this year's fete on March 18th. Who will actually be SLIMED on FETE Day will be decided by the children, casting votes (via gold coin donation) at the 'Slime The Teacher' stall.

The stall will run every **Friday** after school from 3.30 to 3.35pm at the canteen in the lead up to the fete.

Meet our candidates:

Shaun Wells, Dale McLean, Sam Gaudion, Steve Bruce, Eleanor Yewers, Anita Hillman and our new art teacher Amy Murray.

The 3 teachers with the most votes will be slimed on Fete Day at 2.30pm. Drop an extra coin and go in the draw to be the lucky NPS student to slime the teacher yourself! Just write your name and class on the clipboard next to the voting tins. **So bring those gold coins to school every Friday, buy an icy pole and cast your vote. You can vote as many times as you like! All proceeds go towards the school.**



SLIME-A -TEACHER

Vote for which teacher gets slimed on fete day,
and go in the draw to slime the teacher yourself!

**1 vote =
1 gold
coin**

**You can
vote as many
times as
you like!**



We need Fete volunteers- Please Sign Up!

The Fete Committee desperately NEEDS more parents/carers to help out on stalls on the big day.

We need parent volunteers to assist us in running various stalls on Fete Day.

We're asking families to sign up to one or two fete stalls with each shift only 1 hour.

All you have to do is turn up, help out and have fun!

Rosters are in 1-hour blocks - you are able to choose a few different stalls to volunteer for - so please do!

We have over 500 spots to fill and we're not even close to filling half the stalls & the fete is only 4 weeks away!!

This will help our Fete run smoothly and successfully on the day.

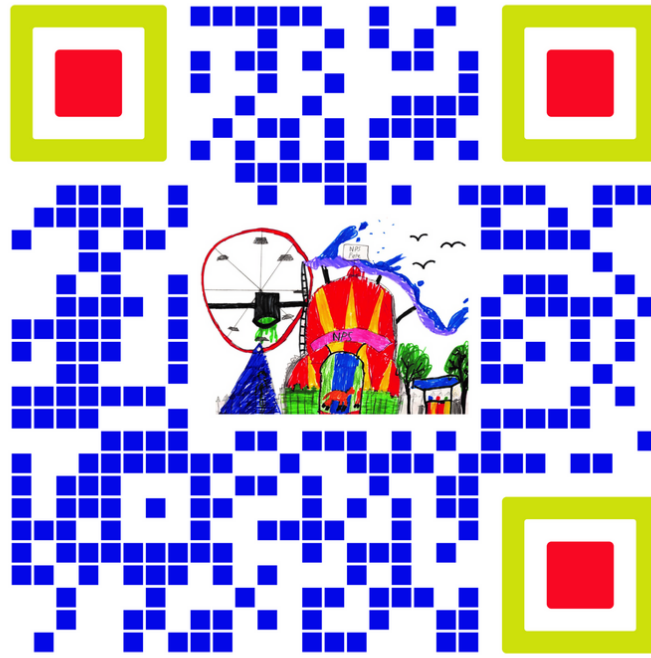
Please use the QR code below to sign up to help out on your chosen stalls.

We need your help!

We're asking families to sign up to one or two fete stalls with each shift only 1 hour.

All you have to do is turn up, help out and have fun!

Many thanks in anticipation



NPS Fete sign up



Our Proud Sponsor

Northcote Primary School is proudly sponsored by Jellis Craig Inner North.

Jellis Craig will donate \$500 sales commission or \$350 rental fee to Northcote Primary School when a family or staff member appoints a Jellis Craig Inner North Agent to sell or lease their home throughout 2023. Please Mention you are part of our NPS village to ensure our school receives these generous donations.

Jellis Craig



Northcote
Primary School



Northcote Primary School is proudly sponsored throughout 2023 by Jellis Craig Inner North

Jellis Craig will donate \$500 sales commission or \$350 rental fee to Northcote Primary School when a family or staff member appoints a Jellis Craig Inner North Agent to sell or lease their home throughout 2023. Please mention you are part of our NPS village to ensure our school receives these generous donations.





2023 First Aid Team

Introducing the NPS 2023 First Aid Team

For our returning families there will be some familiar faces, and for our new families our first aid team is

- Donna Cassidy
- Bridgette McCoy
- Caterina Carnovale

If your child becomes unwell one of our fantastic First Aid Officers will be tending to them and will be in contact with you if necessary.

The first aid office is located behind Bridgette's desk in front office (the other end to the front doors)

If your child is needing to be picked up, where possible we will organise their school bag and belongings and you can collect them from the front office 😊

Action Plans

Parents and carers are reminded that if their child has anaphylaxis, allergies, or asthma that their child **MUST HAVE A CURRENT PLAN.**

Red ASCIA Anaphylaxis Plan for use with EpiPen® adrenaline (epinephrine)

autoinjectors is attached below and must be prepared in colour, completed by your GP and have a current photo of your child attached to it.

ascia
www.allergy.org.au

ACTION PLAN FOR Anaphylaxis

For use with **EpiPen®** adrenaline (epinephrine) autoinjectors

Name: _____
Date of birth: _____

Confirmed allergens: _____

Family/emergency contact name(s):
1. _____
Mobile Ph: _____
2. _____
Mobile Ph: _____

Plan prepared by doctor or nurse practitioner (NP): _____
The treating doctor or NP hereby authorises medications specified on this plan to be given according to the plan, as consented by the patient or parent/guardian.
Whilst this plan does not expire, review is recommended by 30/06/21

Signed: _____
Date: _____

How to give EpiPen®

- Form fit around EpiPen® and PULL OFF BLUE SAFETY RELEASE
- Hold leg, sit and PLACE ORANGE END against outer mid thigh (with or without clothing)
- PUSH DOWN HARD until a click is heard or felt and hold in place for 5 seconds REMOVE EpiPen®

EpiPen® is prescribed as follows:
• EpiPen® 150 mg for children 15-20kg
• EpiPen® 300 mg for children over 20kg and adults

Note: If adrenaline is accidentally injected (e.g. into a thumb) phone your local poisons information centre. Continue to follow this action plan for the person with the allergic reaction.

© ASCIA 2022. This plan was developed as a medical document that can only be completed and signed by the patient's doctor or nurse practitioner and cannot be altered without their permission.

Anaphylaxis EpiPen Plan Template.pdf

Red ASCIA Anaphylaxis Plan for use with Anapen® adrenaline (epinephrine)

autoinjectors is attached below and must be prepared in colour, completed by your GP and have a current photo of your child attached to it.

ascia
www.allergy.org.au

ACTION PLAN FOR Anaphylaxis

For use with **Anapen®** adrenaline (epinephrine) autoinjectors

Name: _____
Date of birth: _____

Confirmed allergens: _____

Family/emergency contact name(s):
1. _____
Mobile Ph: _____
2. _____
Mobile Ph: _____

Plan prepared by doctor or nurse practitioner (NP): _____
The treating doctor or NP hereby authorises medications specified on this plan to be given according to the plan, as consented by the patient or parent/guardian.
Whilst this plan does not expire, review is recommended by _____

Signed: _____
Date: _____

How to give Anapen®

- PULL OFF BLACK SAFETY CAP
- PULL OFF GREY SAFETY CAP from red button
- PLACE NEEDLE END FIRMLY against outer mid thigh at 90° angle (with or without clothing)
- PRESS RED BUTTON for 10 seconds and hold for 10 seconds REMOVE Anapen®

Anapen® is prescribed as follows:
• Anapen® 150 mg for children 15-20kg
• Anapen® 300 for children over 20kg and adults
• Anapen® 500 for children and adults over 50kg

Note: If adrenaline is accidentally injected (e.g. into a thumb) phone your local poisons information centre. Continue to follow this action plan for the person with the allergic reaction.

© ASCIA 2022. This plan was developed as a medical document that can only be completed and signed by the patient's doctor or nurse practitioner and cannot be altered without their permission.

Anaphylaxis Anapen Plan Template.pdf

Blue Asthma Australia School Action Plan is attached below and must be prepared in colour, completed by your GP and have a current photo of your child attached to it. If your child has Ventolin at school, they must have an Asthma Action Plan.

FOR USE WITH PUFFER AND SPACER
ASTHMA ACTION PLAN

VICTORIAN SCHOOLS

Student's name: _____

DOB: _____

Confirmed triggers: _____

PHOTO

Child can self-administer if well enough

Child needs to pre-medicate prior to exercise

Face mask needed with spacer

ALWAYS give adrenaline autoinjector **FIRST** and then asthma reliever puffer if someone with known asthma and allergy to food, insects or medication has **SUDDEN BREATHING DIFFICULTY** (including wheeze, persistent cough or hoarse voice) even if there are no skin symptoms.

Adrenaline autoinjector prescribed: Y N Type of adrenaline autoinjector: _____

ASTHMA FIRST AID

For Severe or Life-Threatening signs and symptoms, call for emergency assistance immediately on Triple Zero "000"
Mild to moderate symptoms do not always present before severe or life-threatening symptoms

- Sit the person upright
Stay with the person and be calm and reassuring
- Give _____ separate puffs of Asthma, Asmol or Ventolin
Shake the puffer before each puff
Puff 1 puff into the spacer at a time
Take 4 breaths from spacer between each puff
- Wait 4 minutes
If there is no improvement, repeat step 2
- If there is still no improvement call emergency assistance
Dial Triple Zero "000"
Say "ambulance" and that someone is having an asthma attack
Keep giving _____ puffs every 4 minutes until emergency assistance arrives
Commence CPR at any time if person is unresponsive and not breathing normally.

Blue/grey reliever medication is unlikely to harm, even if the person does not have asthma.

SIGNS AND SYMPTOMS	MILD TO MODERATE	SEVERE	LIFE-THREATENING
<p>Minor difficulty breathing</p> <ul style="list-style-type: none"> • May have a cough • May have a wheeze • Other signs to look for: 	<ul style="list-style-type: none"> • Cannot speak a full sentence • Sitting hunched forward • Tugging in of skin over chest/ribs • May have cough or wheeze • Obvious difficulty breathing • Lethargic • Sore tummy (young children) 	<ul style="list-style-type: none"> • Unable to speak or 2 words • Collapsed/exhausted • Gasping for breath • May no longer have a cough or wheeze • Drowsy/confused/unconscious • Blue discoloration (blue lips) 	

Emergency contact name: _____ Plan prepared by Dr or Nurse Practitioner: _____

Work ph: _____ Signed: _____
Print name and position on the spacer

Home ph: _____ Date prepared: _____

Mobile ph: _____ Date of next review: _____

• Place mouthpiece of spacer in mouth and ensure lips seal around it.

• Breathe out gently into the spacer.


• Press down on puffer canister once to fire medication into spacer.

• Breathe in and out normally for 4 breaths (keeping your mouth on the spacer).

© Asthma Australia August 2023. This plan was developed as a medical document that can only be completed and signed by the patient's treating medical doctor or nurse practitioner and cannot be altered without their permission.

Asthma Action Plan Template.pdf

Green ASCIA Allergic Reaction Plan is attached below and must be prepared in colour, completed by your GP and have a current photo of your child attached to it.



www.allergy.org.au

ACTION PLAN FOR
Allergic Reactions

Name: _____

Date of birth: _____

Confirmed allergens: _____

Family/emergency contact name(s):
1. _____
Mobile Ph: _____
2. _____
Mobile Ph: _____

Plan prepared by doctor or nurse practitioner (n):

The treating doctor or nsp hereby authorises medications specified on this plan to be given according to the plan, as recommended by the patient or parent/guardian, including use of adrenaline if available.

Whilst this plan does not expire, review is recommended by (C) (M) (Y) _____

Signed: _____
Date: _____

Note: This ASCIA Action Plan for Allergic Reactions is for people who have allergies but do not have a prescribed adrenaline (epinephrine) injector. For instructions refer to the device label or the ASCIA website www.allergy.org.au/anaphylaxis

Adrenaline injectors are given as follows:

- 150 mcg for children 7.5-20kg
- 300 mcg for children over 20kg and adults
- 300 mcg or 500 mcg for children and adults over 50kg

SIGNS OF MILD TO MODERATE ALLERGIC REACTION

- Swelling of lips, face, eyes
- Hives or welts
- Tingling mouth
- Abdominal pain, vomiting - these are signs of anaphylaxis for insect allergy

ACTION FOR MILD TO MODERATE ALLERGIC REACTION

- For insect allergy - flick out sting if visible
- For tick allergy seek medical help or freeze tick and let it drop off
- Stay with person and call for help
- Give antihistamine (if prescribed)
- Phone family/emergency contact


Mild to moderate allergic reactions (such as hives or swelling) may not always occur before anaphylaxis

WATCH FOR ANY ONE OF THE FOLLOWING SIGNS OF ANAPHYLAXIS (SEVERE ALLERGIC REACTION)

- Difficult or noisy breathing
- Swelling of tongue
- Swelling or tightness in throat
- Wheeze or persistent cough
- Difficulty talking or hoarse voice
- Persistent dizziness or collapse
- Pale and floppy (young children)

ACTION FOR ANAPHYLAXIS

1. LAY PERSON FLAT - do NOT allow them to stand or walk
 - If unconscious or pregnant, place in recovery position - on left side if pregnant, as shown below
 - If breathing is difficult allow them to sit with legs outstretched
 - Hold young children flat, not upright




2. GIVE ADRENALINE INJECTOR IF AVAILABLE
3. Phone ambulance - 900 (AU) or 111 (NZ)
4. Phone family/emergency contact
5. Transfer person to hospital for at least 4 hours of observation

IF IN DOUBT GIVE ADRENALINE INJECTOR
Commence CPR at any time if person is unresponsive and not breathing normally

ALWAYS GIVE ADRENALINE INJECTOR FIRST, and then asthma reliever puffer if someone with known asthma and allergy to food, insects or medication has **SUDDEN BREATHING DIFFICULTY** (including wheeze, persistent cough or hoarse voice) even if there are no skin symptoms

Asthma reliever medication prescribed: Y N

 Allergy Plan Template.pdf

All plans **must be updated annually**, one of our first aid team will contact you when your child's plan is approaching expiration.

NPS Medication Authority Form

Parents **must provide all necessary medications** to be administered in the event of an emergency.

Medications will be administered by one of our trained First Aid Team members.

All medication is to be stored in the First Aid Room, NOT in the student's bag or classroom.

Any medication being stored at/administered on school grounds requires a NPS 2023 Medication Authority Form. These forms are to be **updated at the start of each year** (even if there has been no change to medications). These can be filled out by parents/carers or by a GP.

This form **must** be filled out regardless of a student having a medical plan.

It must also be filled out for ongoing medication as well as temporary (for example, this form is required if a student is unwell and needs to be administered a course of antibiotics during school hours, as well as if a student requires a hay fever tablet only when symptoms arise).



2023

Medication Authority Form
for a student who requires medication whilst at school

Name of School: **Northcote Primary School**
Student's Name: _____ Date of Birth: _____

Please Note: wherever possible, medication should be scheduled outside the school hours, e.g. medication required three times a day is generally not required during a school day; it can be taken before and after school and before bed.

Reason for Medication/s	Name of Medication/s	Dosage (amount)	Time/s to be taken	How it's taken (e.g. orally/topical/injection)	Dates
					Expiry Date: / / <input type="checkbox"/> Ongoing medication <input type="checkbox"/> Temporary medication
					Expiry Date: / / <input type="checkbox"/> Ongoing medication <input type="checkbox"/> Temporary medication
					Expiry Date: / / <input type="checkbox"/> Ongoing medication <input type="checkbox"/> Temporary medication
					Expiry Date: / / <input type="checkbox"/> Ongoing medication <input type="checkbox"/> Temporary medication

Medication Storage:
Please indicate if there are specific storage instructions for the medication:

Medication delivered to the school

Please ensure that medication delivered to the school:
 Is in its original package
 The pharmacy label matches the information included in this form.

Self-management of medication

Students in the early years will generally need supervision of their medication and other aspects of health care management. In line with their age and stage of development and capabilities, older students can take responsibility for their own health care. Self management should follow agreement by the student and their parent/carer, the school and the student's medical/health practitioner.
Please advise if this person's condition creates any difficulties with self management, for example, difficulty remembering to take medication at a specified time or difficulties coordinating equipment.

Monitoring effects of Medication

Please note: School staff do not monitor the effects of medication and will seek emergency medical assistance if concerned about a student's behaviour following medication.

Privacy Statement
The school collects personal information so as the school can plan and support the health care needs of the student. Without the consent of this information the quality of the health support provided may be affected. The information may be disclosed to relevant school staff and appropriate medical personnel, including those engaged in providing health support as well as emergency personnel, where appropriate, or where authorized or required by another law. You are able to request access to the personal information that we hold about you/your child and to request that it be corrected. Please contact the school directly or FOI Unit on 94372676.

Authorisation:

Name of Medical/health practitioner: _____

Professional Role: _____ Contact details: _____

Signature: _____ Date: _____

Name of Parent/Carer: _____

Contact details: _____

Signature: _____ Date: _____

**If additional advice is required, please attach it to this form



Copies of all forms can be found in the links on this page, alternatively printed copies of all forms can be collected from Bridgette and Donna in the front office.

Duty of Care

All NPS staff have a duty of care to our students – if we cannot establish contact with a parent/carer or emergency contact, an ambulance will be called if deemed necessary. Please ensure you make every attempt to be contactable during school hours, have voicemail set up on your phone and that your emergency contact details stored at the office are up to date.



CSEF

Camps, Sports and Excursions Funds

CSEF: Camps, Sports and Excursions Funds



FINANCIAL ASSISTANCE INFORMATION FOR PARENTS

Every Victorian child should have access to the world of learning opportunities that exist beyond the classroom. The Camps, Sports and Excursions Fund helps ensure that no student will miss out on the opportunity to join their classmates for important, educational and fun activities. It is part of making Victoria the Education State and the Government's commitment to breaking the link between a student's background and their outcomes.

CAMPS, SPORTS & EXCURSIONS FUND (CSEF)

School camps provide children with inspiring experiences in the great outdoors. Excursions encourage a deeper understanding of how the world works while sports teach teamwork, discipline and leadership. All are a part of a healthy curriculum.

CSEF is provided by the Victorian Government to assist eligible families to cover the costs of school trips, camps and sporting activities.

If you hold a valid means-tested concession card or are a temporary foster parent, you may be eligible for CSEF. A special consideration category also exists for asylum seeker and refugee families. The allowance is paid to the school to use towards expenses relating to camps, excursions or sporting activities for the benefit of your child.

The annual CSEF amount per student is:

- \$125 for primary school students
- \$225 for secondary school students

MORE INFORMATION

For more information about CSEF visit:

<https://www.education.vic.gov.au/about/programs/Pages/csef.aspx>

HOW TO APPLY

New applicants should contact the school office to obtain a CSEF application form or download from the website below.

If you applied for CSEF at your child's school last year, you do not need to complete an application form this year unless there has been a change in your family circumstances.

You only need to complete an application form if any of the following changes have occurred:

- **new student enrolments;** your child has started or changed schools this year.
- **changed family circumstances;** such as a change of custody, change of name, concession card number, or new siblings commencing this year.

Check with the school office if you are unsure.



Financial Assistance Info for Parents.pdf



CSEF ELIGIBILITY

Below are the criteria used to determine a student's eligibility for the Camps, Sports and Excursions Fund (CSEF).

Criteria 1 – General eligibility

To be eligible for the fund, a parent or carer of a student attending a registered Government or non-government Victorian primary or secondary school must:

- on the first day of Term one
 - on the first day of Term two
- a) be a holder of one or more of the eligible financially-means tested cards **OR** be a temporary foster parent, and;
- b) submit an application to the school by the due date.

For the list of eligible financially-means tested cards refer to the CSEF Policy: <https://www2.education.vic.gov.au/pal/camps-sports-and-excursions-fund/policy>

Parents who receive a Carer Allowance on behalf of a child, or any other benefit or allowance not income tested by Centrelink, are not eligible for the CSEF unless they also comply with the above.

Criteria 2 - Be of school age and attend school in Victoria

For the purposes of CSEF, students may be eligible for assistance if they attend a Victorian registered primary or secondary school. CSEF is not payable to students attending pre-school, kindergarten, home schooled, or TAFE.

Special Consideration

A special consideration category exists for

- Families on a bridging visa, temporary protection visa, in community detention or are asylum seeker families
- Students in temporary out of home care arrangements, including statutory kinship care

For more information, see <https://www2.education.vic.gov.au/pal/camps-sports-and-excursions-fund/guidance/eligibility>

Eligibility Date

For concession card holders CSEF eligibility will be subject to the parent/carers concession card being validated successfully with Centrelink on the first day of either term one (30 January 2023) or term two (24 April 2023).

PAYMENT AMOUNTS

CSEF payment amount

The CSEF is an annual payment to the school to be used towards camps, sports and/or excursion expenses for the benefit of the eligible student.

- Primary school student rate: \$125 per year.
- Secondary school student rate: \$225 per year.

The CSEF is paid directly to your child's school and will be allocated by the school towards camps, sports and/or excursion costs for your child.

For ungraded students, the rate payable is determined by the student's date of birth. For more information, see: www.education.vic.gov.au/about/programs/Pages/csef.aspx

Year 7 government school students who are CSEF recipients are also eligible for a uniform voucher. Secondary schools are required to make applications on behalf of parents/carers so please register your interest at the school.

HOW TO COMPLETE THE APPLICATION FORM

NOTE: ALL SECTIONS MUST BE COMPLETED BY PARENT/LEGAL GUARDIAN

1. Complete the PARENT/CARER DETAILS section.
Make sure that the Surname, First Name, and Customer Reference Number (CRN) details match those on your concession card. You will also need to provide your concession card to the school.
If you are claiming as a temporary Foster Parent or a Veteran Affairs Pensioner, you will need to provide a copy of documentation confirming your status as a temporary Foster Parent or provide your Veterans Affairs Pensioner Gold card to the school.
If you are seeking special consideration, mark this in the form and provide a copy of the relevant documentation.
2. Complete the STUDENT/S DETAILS section for students at this school.
3. Sign and date the form and return it to the school office as soon as possible. The CSEF program for 2023 closes on the 23 June 2023.

 CSEF Eligibility.pdf



CAMPS, SPORTS AND EXCURSIONS FUND (CSEF) APPLICATION FORM

School Name

School REF ID

Parent/carer details

Surname _____

First name _____

Address _____

Town/suburb _____ State _____ Postcode _____

Contact number _____

Centrelink pensioner concession **OR** Health care card number (CRN)

- - - **OR**

Foster parent under a temporary care order* **OR** Veterans affairs pensioner (Gold Card)**

*Foster Parents must provide a copy of the temporary care order letter from the Department of Families, Fairness and Housing (DFFH).

**Applicants must provide a copy of the Veteran Affairs Gold card

Is this an application for special consideration (no CRN needed)? Yes No

Student details

Student's surname	Student's first name	Student ID	Date of birth (dd/mm/yyyy)	Year level

I authorise the Department of Education and Training (DET) to use Centrelink Confirmation eServices to perform an enquiry of my Centrelink customer details and concession card status in order to enable the business to determine if I qualify for a concession, rebate or service. I also authorise the Australian Government Department of Families, Fairness and Housing (DFFH) to provide the results of that enquiry to DET.

I understand that:

- DFFH will use information I have provided to DET to confirm my eligibility for the Camps, Sports and Excursions Fund and will disclose to DET personal information including my name, address, payment and concession card type and status.
- this consent, once signed, remains valid while my child is enrolled at a registered Victorian school unless I withdraw it by contacting the school.
- I can obtain proof of my circumstances/details from DFFH and provide it to DET so that my eligibility for the Camps, Sports and Excursions Fund can be determined.
- If I withdraw my consent or do not alternatively provide proof of my circumstances/details, I may not be eligible for the Camps, Sports and Excursions Fund provided by DET.
- Information regarding my eligibility for the Camps, Sports and Excursions Fund may be disclosed to the DFFH and/or State Schools Relief for the purpose of evaluating concession card services or confirming eligibility for assistance.

You are able to request access to the personal information that we hold about you, and to request that any errors be corrected, by contacting your child's school.

Signature of applicant _____ Date ____ / ____ /2023



CSEF_application_form_2023.docx



Classroom Cuisine 2023

This is the current lunch menu from Classroom Cuisine. Lunch orders are delivered to NPS everyday, with the exception Tuesdays.

For our new families please note that this is an external lunch provider, all lunches are ordered online and orders should be placed by 8.30am.

Please Note: The "Canteen" function on Compass is not to order lunches, it is used primarily for our fundraisers.



SERVICING NORTHCOTE PRIMARY SCHOOL
AVAILABLE ON MONDAY, WEDNESDAY, THURSDAY & FRIDAY
Order ONLINE until 8.30am on the DAY LUNCH IS REQUIRED

LUNCH ITEM ONE

SALADS

Greek Style Salad with Feta and Olives (V, GF)
 Pic(k)nic Box – Vegetarian (V, GF)
 Pic(k)nic Box with Ham (GF)
 Pic(k)nic Box with a Whole Egg
 Falafel with Tabouli Salad (V,G/DF, H)
 Mexican Inspired Salad (V, GF)
 Tuna Mix with Brown Rice & Quinoa Cakes (V, GF)

SUSHI

Teriyaki Chicken Hand Rolls (2)
 Cooked Tuna Hand Rolls (2)
 Avocado Hand Rolls (2)
 Cucumber Hand Rolls (2)
 Vegetarian Hand Rolls (2)
 Tofu Hand Rolls (2)

BAKERY

Cheese and Bacon Roll
 Cheese and Vegemite Scroll (w/m)
 SCROLL with Ham & Cheese
 Semi Dried Tomato and Olive ROLL
 Topped with Only Cheese Roll
 GOZLEME - Lamb & Beef (H)
 GOZLEME - Spinach and Cheese (V, H)

BAKED FRESH PIZZAS

(Thin & Crisp, Served at room temp)

Margherita Pizza
 Ham and Pineapple Pizza

SANDWICHES, ROLLS & WRAPS

Turkey, Cranberry, Lettuce and Cheese Sandwich
 Gluten Free Ham & Cheese Sandwich (GF)
 Simple Salad Roll (V)
 Cucumber & Ham Sandwich (GF)
 Vegemite Sandwich (2)
 Mild Salami and Salad Roll
 Plain Cheese Sandwich (2)
 Roast Beef, Fruit Chutney, Cheese and Lettuce Roll
 Cheese and Salad Roll
 Wholegrain ROLL with Cheese and Tomato
 WRAP (GF, DF) Ham and Salad
 Wholegrain Ham and Cheese Sandwich
 Chicken MAYO and Lettuce Roll (H)
 Garden Salad Wrap (GF,DF,V)

LUNCH ITEM TWO/THREE

FRESH FRUIT & VEG

Freshly chopped strawberries with Grapes
 Fresh Fruit Combo
 Lightly Steamed Corn wheels & Broccoli pieces
 Celery & Carrot Sticks with Sultanas
 Chopped Carrot, Cucumber, Red & Yellow Capsicum
 Apple pieces with Lemon Juice, Cinnamon & Brown Sugar
 Chia Bowl with Banana, Coconut & Strawberries
 Sugar Snap Peas, Beans & Cherry Tomatoes
 Cantaloupe & Honeydew pieces
 Edamame (Lightly Salted)
 Cherry Tomatoes with Tasty Cheese & Rice Crackers
 Freshly chopped Orange Segments
 Whole Fruit – Banana OR Mandarin

YOGHURT

Strawberry Chobani Yoghurt
 Blueberry Chobani Yoghurt
 Passionfruit Chobani Yoghurt
 Plain Chobani Yoghurt

BAKED GOODS

Choc Chip Cookie
 Cornflake Cookie
 Finger Bun with Sprinkles
 Hedgehog Slice
 Choc Cup Cake (GF,DF)
 Blueberry Muffin
 Fruit Bun
 Jam Drop Biscuit (GF, NF, H)

DIPS & CRACKERS

Tzatziki Dip with Rice Crackers
 Avocado Dip with Rice Crackers
 Spring Onion Dip with Rice Crackers

POPCORN/SNACKS

Dried Fruit Medley with a Yoghurt Frog
 Popcorn - Lightly Salted
 Popcorn - Slightly Sweet, Lightly Salted
 Lightly salted Fav'va Beans
 Chickpeas with Lime & Black Pepper
 Balsamic & Sea Salt Fav'va Beans

DRINKS

Apple Juice
 Orange Juice
 Full Cream Milk
 Nippy's Chocolate Milk
 Strawberry (Lactose Free) Milk
 So Good Soy Milk

Healthy, Interesting & Affordable Lunches Delivered to School!


More information about Our Offering including
 Pricing, Ingredients and Portion Size is available on the Our Menu Page at

www.classroomcuisine.com.au



OSH Club Information

<https://www.oshclub.com.au/vic/northcote-primary-school/>

 northcote-primary-OSHC.pdf



Welcome to OSHClub

Let's go!

OSHClub pride ourselves on providing your children with fun, play-based learning experiences before and after school as well as during the school holidays. Whether your child attends OSHC daily or only occasionally, each visit is an exciting and engaging adventure!



Compelling programs

We'll empower your child to explore, navigate, experiment and engage in a diverse range of experiences.

Educators who care

Our educators will embrace your child's journey: caring deeply, thinking creatively and inspiring them to thrive.

Future ready

We focus on building knowledge, skills and behaviours that help prepare your child for whatever the future may hold.

Unified partnership

As an integral part of the school community, together we'll create a fun and engaging environment for your child to flourish.

Fabulous food

We fuel curious minds and growing bodies, helping to shape your child's understanding of health and wellness positively.

Peace of mind

You can be confident that your child is safe, happy and given every opportunity to fulfill their potential.

Join the fun. Be active. Get together.

Key Service information

Northcote OSHClub



PROGRAM	TIMES	FULL FEES	FEE AFTER 85% CCS*
Before School Care	07:30 AM - Bell Time	\$18.00	\$3.78
After School Care	Bell Time - 06:00 PM	\$25.00	\$3.75
Holiday Programs	07:30 AM - 06:00 PM	\$71.50	\$10.73

Fees and hours of operation as at term 1, 2023 and may be subject to change

Enrolments

Enrolling with OSHClub is easy and completely free, just head to our website oshclub.com.au and click Join OSHClub. Your child's enrolment must be confirmed before attending their first session with us.

Bookings & cancellations

Once enrolled, you can manage your bookings and cancellations with ease online or via the Kidsoft app.

Before & After School Care

Bookings can be made online any time up to 24 hours before the session commences. To make a booking after this time, please contact your service directly on 0437 692 819. Late bookings will incur an additional \$4.00 fee.

To avoid any out of pocket costs, cancellations must be made at least 48 hours before the session commences. Cancellations within this period will incur the full fee, less any applicable CCS.

School holidays

Holiday bookings can be made online up to 5 days before the session commences. To make a booking after this time, please contact your service directly on 0437 692 819. Late bookings will incur an additional \$4.00 fee.

To avoid any out of pocket costs, cancellations must be made at least 7 days before the session commences. Cancellations within this period will incur the full fee, less any applicable CCS.

Child care subsidy (CCS)*

Many families are eligible for Child Care Subsidy (CCS), which can reduce the cost of Outside School Hours Care by up to 85%. All our services are CCS approved, so we encourage all families to find out whether they are eligible. To establish what level of CCS you may be entitled to please contact the Centrelink Family Line on 13 61 50.

Statements & payments

Fees will be automatically debited every 2 weeks in arrears from the bank account, VISA or MasterCard you nominated during enrolment. Transaction fees apply. Dishonour fee will also be applicable if a transaction is declined. You can view your statements via your online account.

Late pick-up

A \$1.00 per minute, per child fee may apply for children picked up after the service close time.

No show

An additional \$5.00 fee per child may be charged for any After School Care booking where no cancellation is provided.

Incursions & excursions

Holiday program incursions and excursions may incur additional fee. These vary based on activity and may be subject to change.

For account specific enquiries, please contact our Customer Service and Billing Team on 1300 395 735 or email oshaccounts@junioradventuresgroup.com.au. Our team are available 9am - 7pm Monday - Friday (AEST/AEDT).

Medical management

So we can provide the best and safest care, it is important that you inform the service if your child/ren has an identified health care need, allergy or relevant medical condition diagnosed by a registered medical practitioner. On your first day of attendance, bring along a completed Risk Minimisation form, Medical Management forms and any required medications. All medications (including ointments and creams) must be prescribed by a medical practitioner, be in the original container with original pharmacist labels and clear instructions. All labels must be legible and undamaged, and the medication must still be within its expiry date.

We're here to help!

Come and see us in-service, email or give us a call.

We look forward to welcoming you soon

0437 692 819

northcote@oshclub.com.au

OSHClub.com.au



COVID Process for Confirmed cases and close contacts 2023

To clarify the process for if your child tests positive to Covid19, or is a confirmed household (or household-like) contact, please follow the information below.

If your child tests positive to COVID19:

1. Email the **school office** on northcote.ps@education.vic.gov.au, CC your child's classroom teacher into the email. Please include all of the following details:

- the last day your child attended school;
- your child's homegroup teacher;
- the date the positive result was received;
- if the test was a PCR or RAT;
- if your child attends OSH, Kelly Sports, Chess or Music;
- if your child is symptomatic or asymptomatic.

1. Parents/carers should complete the Student COVID-19 [COVID Test Portal](#) if a student tests positive to COVID-19 (via a PCR or rapid antigen test). Where a parent/carer informs the school by phone or written notification, the school should complete the [Schools COVID Case Management Tool](#).

2. Students who report a positive result are recommended to isolate for a minimum of 5 days and not attend school until their symptoms have resolved. Students who isolate as a result of a positive COVID-19 test should be supported in the same way as students with an extended absence due to illness or injury, with learning materials provided to support their continued learning.

3. There is no longer a requirement for principals to inform the school community of a positive case associated with the school.

Schools must treat health information, including positive COVID-19 test results, in accordance with the [Schools' Privacy Policy](#). COVID-19 diagnoses are not to be shared or discussed unless the individual (or their parent/carer) provides consent, or unless schools are legally obliged or authorised to do so. Further guidance on the handling of health care information can be found on PAL under [Privacy and information sharing – Health care information](#)

If your child is a household (or household-like) contact:

1. Email the **school office** on northcote.ps@education.vic.gov.au, CC your child's classroom teacher into the email. Please include all of the following details:
 - if your child will be isolating at home over the next 5 days, or if they will attend school (if choosing to attend school, please see further information below)
 - what date the student was exposed to the confirmed COVID19 case, and when the 5 day isolation period ends.

If your child is attending school during the 5 day period, these additional precautions must be taken:

- the family must notify the school that the child is a household contact.
- the child must take rapid antigen testing 2 times over the 5 days.
- the child must wear a facemask at all times indoors (if aged 8 years and above or unless they have a valid exemption).
- if the child becomes symptomatic, they must stay/return home and take a RAT or PCR test. If a positive result is confirmed, the advice for 'confirmed case' must be followed.



Important Information

Supervision

Our school gates are unlocked at 8.45am each morning to allow students to enter, the yard is not supervised before this time. Students can enter classrooms from 8.45am each day. The gates are again locked at 9.00am when the bell goes. The gates are unlocked again at 3.20pm and are locked by 3.45pm.

Helmets

When riding a bike or scooter to or from school, all students **MUST** wear a helmet at all times.

Bikes and Scooters

Helmets must be worn on the way to and from school. Bikes and scooters must also be **WALKED** (not ridden) once inside the school.

Please note: bike and scooter storage is not completely secure. Unauthorised access via the external fences has occurred in the past. We highly recommend the use of a personal bike/scooter lock to avoid theft. The school takes no responsibility for the loss or damage of equipment stored on site.

Face Masks

Face masks are no longer mandatory in primary schools. Students are still encouraged to wear a face mask if they are more comfortable in doing so.

Kiss and Go

Just a reminder to families that the Kiss & Go zone is a short-term stopping area where drivers are allowed to stop and park the vehicle for a **short time** – no longer than two minutes – while the student exits or enters the vehicle from the curbside doors. This enables students to walk between the car and the school, using the safety of the footpath.

Purchasing School Hats

Please note: When purchasing a school hat from the office, payment can only be made using a Credit or Debit Card or Cash (Cash must be the correct amount of \$8.50 for each hat).

Currently we only have LARGE sized hats

Ball games before and after school

To ensure everyone feels safe during the busy mornings and afternoons, ball games are not permitted during these times.



2023 Music

Music

Upcoming Events

Grade 3-6 Choir
Rehearsals: Every
Tuesday lunchtime 1:40 -
2:10 in the Music Room



Music at NPS

I am so thrilled to be teaching music this year! Each class will have one session of music each week, similar to Art, PE and Italian.

Throughout our music lessons students will have opportunities to connect with music through regular singing, music games, experimentation with instruments, composition and using music technology. Students will learn key concepts and skills from the Victorian Curriculum.

Please feel free to email me if you have any questions or ideas.

anita.hillman@education.vic.gov.au

Benefits of Music Education

Decades of studies reach the common conclusion that music education improves brain function and development in those undertaking regular instruction. Among many other skills, students are shown to develop greater:

- coordination, rhythm and listening skills relating to reading music and playing instruments accordingly
- confidence, expressive and social skills derived from performing with and in front of others
- problem solving, literacy and mathematical skills associated with the visualisation of numbers and proportions
- creative skills associated with creating, playing, listening to and experiencing music
- language skills, particularly when learning languages relying on tonal communication
- a developed understanding of the cultural and emotional significance of certain types of music and their impacts on other societies and eras.



Late Arrivals & Early Departures

If your child is late or you are collecting them early it is **essential** you do so through the front office. **All Students must be signed in and out** via the Compass Kiosk at the front desk.

For late arrivals a paper slip will print out when they are signed in, this slip is to be given to the teacher so they know the student has signed in at the office.

Please note if you have put a Compass note in for a late arrival or early departure (for example you log on Compass that your child is being picked up at 1.30pm for a medical appointment) you do not need to sign them out via the Compass Kiosk at the office. However, **you still must come into the office to collect the student.**

The Department of Education requires a parent, carer, or listed emergency contact physically collect the child from the office when it is during school hours. This means we are **unable to allow students to leave on their own**, even if it has been logged on Compass. We understand this may be inconvenient at times so please contact Bridgette or Donna in the office on 9481 0009 and they will do their best to assist you 😊 Also, if you know of an early departure in advance, please inform the office and your child's teacher, so they are able to have the student waiting and ready for you to collect.



School Access

For the safety of our students the school grounds are locked at certain times of the day.

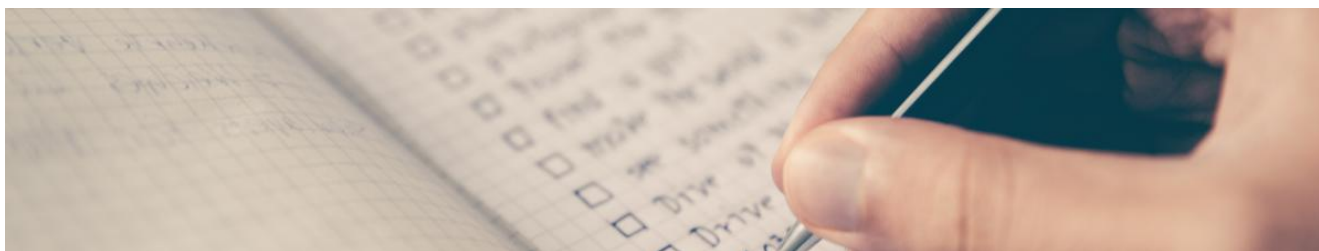
- The gates are opened at **8.45am each morning** for students and parents to enter the school grounds. (before this time the grounds are not supervised by staff)
- The gates are locked at **9.00am each morning** when children are in class.

- The gates are opened at **3.20pm each afternoon** for parents to enter the school grounds to collect their children at 3.30pm when the final bell goes and school ends for the day.
- The gates are locked at **3.45pm each afternoon** after parents have collected their children.

All other times, before, during, and after school hours all gates will be locked. The school can only be accessed through the main gate and front office.

If you need to drop something off for your child or a staff member, you must do so at the front office, Donna or Bridgette will deliver it to them.

If your child arrives late or you are collecting them early they must come via the office to be signed in or out.



Compass Attendance

This is a gentle reminder to parents/carers, about the importance of logging student absences on Compass. This is a Department of Education requirement.

If your child is absent from school or is going to be absent in the future (for example a planned family holiday), it is important that this absence is logged via Compass.

Attached is a parent guide to using compass.

 [Parent-guide-Compass.pdf](#)

The latest update to the Parent App is here!

Here's a short guide on what you can expect from your new Navigation Bar.



Our team has been working on enhancing the usability and overall user experience of Compass. In an effort to make your lives just that tiny bit easier, the latest update is for you - our Parent & Carer community! Check out the new features below.




The hamburger icon that brought you to the old vertical menu has been replaced with a new horizontal navigation bar that displays key icons across the bottom of the screen - **Home, Schedule, Attendance Notes, Shortcuts, Notifications and More.**

The 'Shortcuts' button on the navigation bar is a new feature to give you quicker access to important actions, such as **'pay for an event'** or **'report absence'**. A direct route to get where you need to be!

The 'More' button on the navigation bar will take you to a similar menu as the old one. Modules will now be sorted according to which ones you use the most, allowing for a more straightforward navigation.



If you have any problems logging into compass or figuring out how to add an attendance note, please call our office on 9481 0009, Bridgette and Donna can help you with resetting your password or walk you through the steps to log an absence.

Alternatively if you are having further difficulties with Compass and are unable to log the absence, you can provide Bridgette or Donna an explanation over the phone and they can log it for you.

We understand that sometimes we forget, or things come up and you haven't been able to log an absence, so in times when an absence has not been logged, Bridgette and Donna will give you a call to follow up.

As a reminder, if a student is marked absent an email from Compass will be sent to parents/carers at 10.00am on the day of the absence, asking for it to be logged on Compass.

Many thanks in anticipation of your cooperation in this matter.



Thornbury High School Open Night

Thornbury High School are having their Open Night for the families of students in grades 4-6, Wednesday 29th of March.



OPEN NIGHT

**\$14.9M STEAM CENTRE
OPENING TERM 2, 2023**

**ACHIEVING
CONNECTING
ENGAGING**

THORBURY HIGH SCHOOL
WEDNESDAY 29 MARCH
Outstanding VCE results
Innovative, engaging curriculum
Renowned music program
Wide-ranging sporting opportunities

BOOK ONLINE
THORBURYHS.VIC.EDU.AU
SCHOOL TOURS AVAILABLE
THROUGHOUT THE YEAR

FIND US ON SOCIAL MEDIA
f @THORBURYHIGH





Fete Tickets, Wristbands and Merchandise

Fete Tickets and Wristbands are LIVE

You are now able to go to our TryBookings website and purchase our pre-order tickets and wristbands.

All pricing, rides and activities information will be available via our ticket website.

Also available for pre-order purchase and on the day sales, will be our one of a kind, NPS Merchandise, you wont want to miss out on these!

Scan this





Pre-order now & save!

To receive these exclusive PRE-SALE ONLY discounted rates, purchase your wristbands & ticket bundles via 'trybooking.com' by 5pm Wednesday 15 March.

[Click here to pre-purchase your wristbands & tickets!](#)

PRE-PAID WRISTBANDS – available at a discounted rate to allow children to enjoy unlimited rides, making it easier for parents/guardians on fete day.

Schoolie pre-paid price	Pre-schooler pre-paid price
1 = \$35	1 = \$25
2 = \$65	2 = \$40
3 = \$95	3 = \$65
4 = \$125	

FETE DAY WRISTBANDS (no discount)

Schoolie fete day price	Pre-schooler fete day price
\$40 each	\$30 each

PRE-PAID BUNDLES – available at a discounted rate to allow children to pay for additional activities on fete day.

30-ticket bundle	50-ticket bundle
\$25	\$40

RIDE / ACTIVITY		WRISTBAND	TICKETS
Atomic Drop Water Slide	Schoolie only^	X	5
Dunking Machine – Being Dunked	Schoolie only^	X	5
Dunking Machine – Throwing		X	5
Ninja Stunt Jump	Schoolie only	X	5
Turbo Tubs		X	5
Mobile Playcentre		X	5
Haunted House		X	3
Mini Golf		X	3
Pirate's Treasure		–	2 or \$2
Face Painting		–	5 or \$5
Crazy Hair		–	7 or \$7
Lob-a-Choc		–	Gold coin
Craft Making		–	Free
AFL Workshop		–	Free
Circus Workshop		–	Free
Fire Truck & Police Car Viewing		–	Free

^Please bring along a towel and change of clothes if planning to go on the water slide and/or if you plan to be dunked!

PRE-PAID WRISTBAND COLLECTION OPTIONS

- In person at the canteen (3–4pm)
 - Thursday 16 March
 - Friday 17 March
- Ticket Booth on Fete Day



ADDITIONAL TICKET INFORMATION

- Single tickets (\$1 each) can be purchased on fete day at the Ticket Booth
- Children can use these tickets for rides & activities as listed above
- All stalls selling food, drinks, merchandise & second-hand items - CASH or EFTPOS payments only
- For further information, please email 1401-npsfete@schools.vic.edu.au



NPS Merchandise!

Grab yourself some super fun NPS merch!
Available for pre-order via trybooking.com & on fete day.

<p>NPS Water Pouch (500ml) Available in House Colours: Red / Yellow / Blue / Green</p>	<p>\$5</p>	
<p>NPS Stemless Wine Glass</p>	<p>\$6</p>	
<p>NPS Stubby Holder</p>	<p>\$10</p>	
<p>NPS Tote Bag (limited stock)</p>	<p>\$15</p>	



Compass Pay for all school payments.

Compass Pay at Northcote Primary School.

Compass Pay provides a more consistent approach to parent consent and payments of activities for students and confirm the student's medical requirements through the compass app.

Northcote Primary School has a streamline approach to the collection of payments for Camps, Excursions, Incursions, and the annual Parent Payment Arrangement, and fundraising activities.

This option allows parents/caregivers the opportunity to have all the information on one platform the Compass Parent App.

Cash, EFT and B-pay are available as options, the preferred method of payment is Compass.

Compass creates efficiency for teachers and the office staff where immediately we will be able to see if parents/caregivers have consented and paid for the activity. Parents will receive a push notification from Compass when an activity has been created.

We have attached a copy of the Compass flyer on how to consent and pay for events.

 [CompassPay Parent Guide.pdf](#)



2023 Parent Payment Arrangement - PPA

Dear Parent/ Carers,

On Monday 6th March the 2023 Parent Payment arrangement will be live via Compass for all families.

Attached is a copy of the Parent Payment Arrangement has been approved by the school council on Wednesday 22 of February 2023, for Curriculum Contributions for student use for the 2023 School Year.

The cost for 2023 Parent Payment Arrangement is \$250.00

In the newsletter section compass information, you will find attached a copy of the Compass Pay Parent Guide on how to make payments via Compass.

Please do not hesitate to contact the school's office should you have any concerns.

Kind Regards

Caterina Carnovale
Business Manager

NPS Future students

Tour Dates for 2023



NPS Future Student Tours are about to begin!

Prospective families and children can come and see NPS on a 'business as usual' day, meet the Principal and other staff. School tour times are 9.30 - 10.30am and prospective families are requested to confirm attendance by calling the our school office and registering their name and contact details.

Tour dates are as follows:

Tuesday 14th March	9.30 - 10.30am
Tuesday 21st March	9.30 - 10.30am (this has been changed due to Athletics Day)
Tuesday 2nd May	9.30 - 10.30am
Tuesday 16th May	9.30 - 10.30am
Tuesday 30th May	9.30 - 10.30am

Enrolment packs are available from our office.